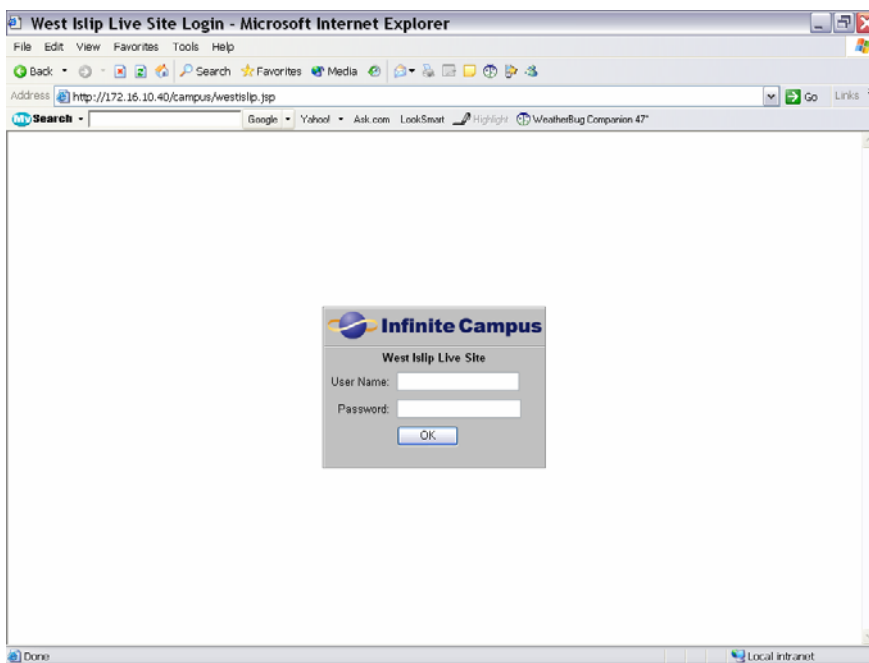


INFINITE CAMPUS LOG ON DIRECTIONS

1. Open Internet Explorer.
2. Go to the district's web site at www.wi.k12.ny.us if it is not already your homepage.
3. Click on the “apple” in the upper left corner.
4. Click on the appropriate link for *Infinite Campus*. (Please note there will be two links: one for access from work, and a second for access from home.)
5. You will see a login page that looks like:



6. Log in with your User Name and Password. (For most staff members, your User Name is your last name, first initial with no spaces or punctuation. For example, John Doe's User Name would be doej.)
7. If you cannot log in because you did not create a password or other related problem, please contact a building or teacher coach for assistance.

PLEASE NOTE: A folder entitled “WIUFSD Sites” has been placed in all staff members home directory (“H: drive”). This folder contains links for email, Absence Track, and *Infinite Campus*. You will be able to access any of these applications directly from these links while at work. These links can be used in the event that the district web site is not accessible.